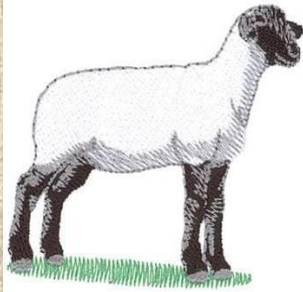
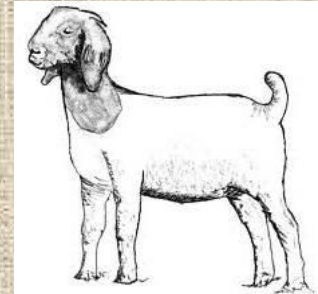


Friendly Suggestions/RULES

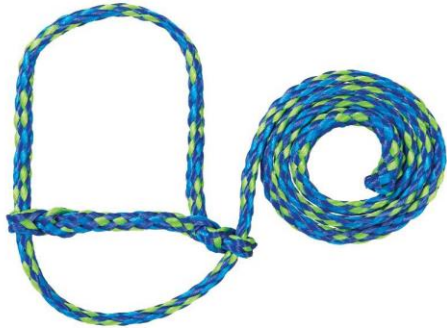


for the



Lamb & Goat Barn

Basic Supplies Needed



Nylon Halter



Muzzle



Flat Back Water Bucket



Plastic Fence Feeder



Heat Lamp

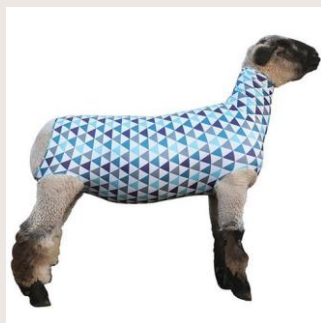


5 gallon poop bucket

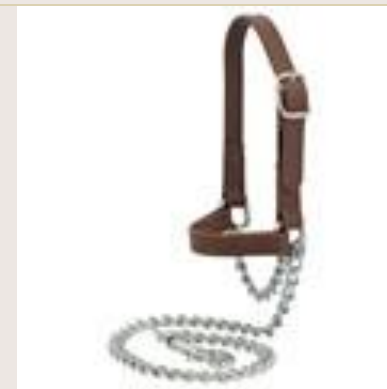
Basic Supplies Needed (cont.)



Blanket



Tube



Show Halter
(goat)

Misc. supplies to have on hand

- Fungal spray/lotion
- Neosporin (antibiotic cream)
- Shampoo/dish washing liquid
- Bandages (for you)

Where do you buy these?

- Local feed store
- ONLINE @
 - Amazon
 - Sullivan Show Supply
 - Weaver Livestock Supply

Feed & Feeding



Find a reputable feed dealer that you want to do business with and choose the feed that will work for you. Your local feed dealer can also assist with recommendations.

Protein will range from 15%-18%- protein supplies the essential amino acids for muscle growth and development.

Local Feed Stores

(utilized by your FFA Members)



Dripping Springs

2111 W Hwy 290

Dripping Springs, TX 78620

(512) 894-0344



501 Bastrop Highway

(501 S. Highway 183),

Austin, TX 78741

Phone: (512) 385-3452



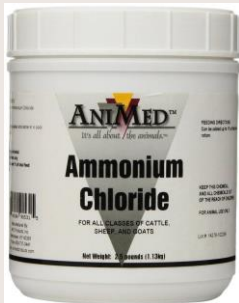
345 Mercer Street, Dripping Springs, TX, (512)

858-4204

Supplements/Feed Additives

NOTE

If you are feeding a manufactured show feed by a reputable company, the ration is supplying all of the nutritional needs of the show animal.



Recommended for goats –
Urinary Calculi Preventative (?)
Can be purchased online
FOLLOW DIRECTIONS

- If your goat is thin (lacking fat cover), you can add a fat source to increase the fat content in the feed and quicken the fattening process.
- If your goat is fat, you can add a protein source to burn fat and increase muscle.
- If you are considering using any other type of feed additive, contact the manufacturer and ask for solid research results that indicate the product provides the results you seek.
- **Do not** feed any type of feed additive that is not labeled for use for market goats. Products like ractopamine hydrochloride are illegal to use in feeding goats.
- **Do not** try a new feed product for the first time at the stock show. If you are going to feed any additional product when you get to the show, try it at home a month or so in advance to make sure that you get the results that you are looking for and that it does not affect your goat adversely.

Cinder Blocks



Years ago... We would place a cinder block under the feed trough thinking it would build up muscle.

NOW ... it has been found to break down their loin

AND... an animal can break a leg if it is placed incorrectly in the slots of the block.

YOUR DAILY TASK

- Exercise EVERY SINGLE DAY- go on a walk, find a hill and run them up and down (**running** is what builds muscles ~ walking pacifies them)
- Clean your pen at least once a day, preferably twice, and take the bucket to the dumpster
- Sweep in front of your pen every day (do not sweep into the middle)
- If your animal poops anywhere in the barn or on the sidewalks, **YOU** HAVE to sweep it up
- Give your animal fresh water twice a day
- Work on showing in the show ring every day (get a group of friends together and go out)
- Feed your animal twice a day (Full feed for goats is estimated at 3.5% of their body weight daily. Simply multiply the goats weight by .035 to determine the amount. 2% of the body weight is considered a maintenance ration- this would be used to “hold” the goat and prevent excessive weight gain.
- Take out trash according to the trash week assignment

Health Concerns

Urinary Calculi- this is a metabolic disease of male goats which includes the formation of calcium stones in the urinary tract. Symptoms include restlessness, kicking at the belly, and continued attempts to urinate. Balanced feed rations will have a 2:1 calcium/ phosphorus ratio 11 and ammonium chloride added to the feed for prevention. Ammonium chloride can be added to the drinking water as a preventative in areas where problems exist.

Ringworm/ skin infections- Skin problems resulting from ringworm and other types of skin infections have increased in severity over the past few years with exhibitors showing at prospect shows. Contagious animals spread the skin infections to other animals through contact. Once the animals have become contaminated, extended treatment is needed to clear up the skin

Internal Parasites/worms: Goats are very susceptible to internal parasites. It is recommended to de-worm your goat when you first get it and establish a de-worming program every 21 days. I recommend taking a stool sample to your veterinarian to verify if the goat has internal parasites, and ,if so, what type.

Poop Buckets

DO NOT

empty themselves

Take them to the dumpster **DAILY**



Do not dump
them behind
the barn or
along the
pathway to the
dumpster

Clipping/Grooming Animals

The Lake Travis Ag Dept/FFA Chapter has 5 sets of clippers that can be checked out for you to clip your animal. It is on a first come/first serve basis. Clippers are to be returned within 24 hours of checking them out.

You are responsible if the clippers are lost/stolen. Secure them when you are finished using them until you can check them back in. **DO NOT LOAN** them to another student! **YOU** are responsible for them!

Lister Star Clippers = \$282.00 on AMAZON

Clipping/Grooming Animals (continued)

NOTE

We attempt to keep blades as sharp as possible. It is p to you to keep the clippers blades oiled/cooled with the clipper oil given to you.

Some students have been know n to purchase their own set of clippers OR their personal blades that fit our clippers (listers)

Blades –

Lamb = Fine or Surgical (\$45 to \$65)

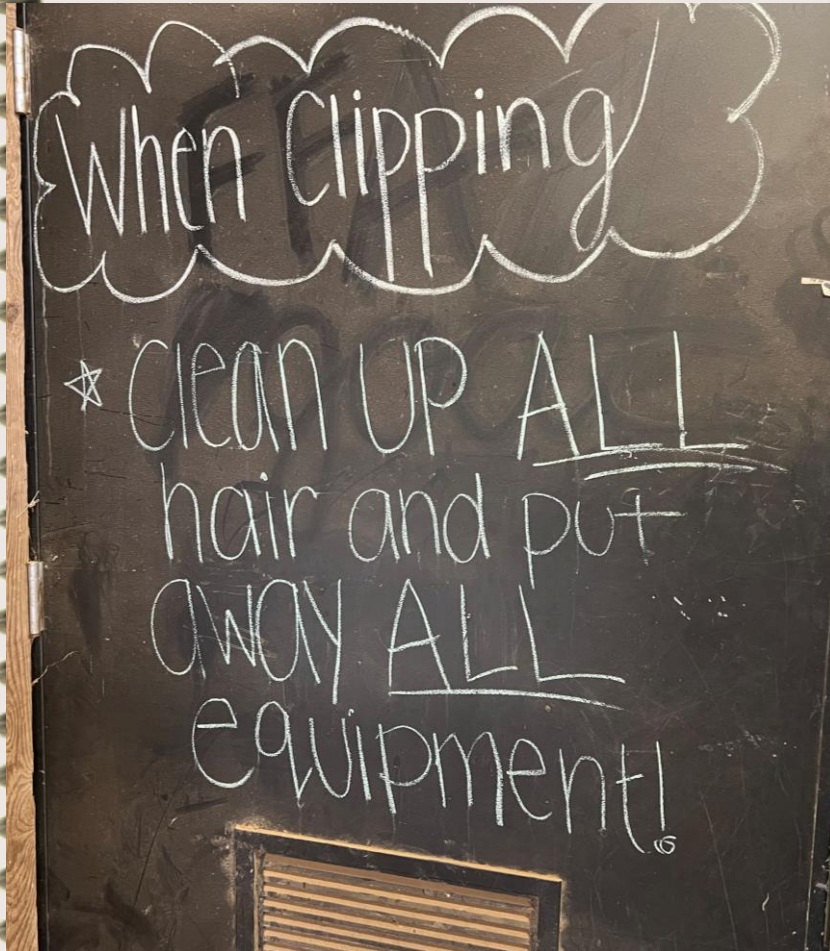
Goats = Medium or Covercote (\$45 to \$70)

Clipping/Grooming Animals (continued)

RULES FOR CLIPPING

1. Thoroughly wash your animal (underside especially – no poop left on animal)
2. Dry your animal
3. Spray coolant spray on clippers every 3 to 5 minutes
4. **CLEAN UP YOUR MESS** when finished.
5. Put hair & poop in a bucket and throw the contents into the dumpster.

Clipping Animals



Sweep **ALL** hair/wool/poop.
Put contents into a bucket and
empty bucket in dumpster.
DO NOT put in trash can and
expect someone to empty
YOUR big mess

Welcome to the Lake Travis Ag Department

If it poops...
You must scoop!



LOOK !!! A show arena that you can practice showing your animal in...

Jackpots are good practice ...

You & your friends can jackpot everyday here !!!



BARN RULES

- DO NOT let your animals roam (always keep them on a halter)
- If your animal has any skin disease or sickness and do not put them with other animals, keep them isolated in their pen
- Sanitize every community piece of equipment you use (stands, treadmill, scale, etc.)
- Do not touch other people's animals (unless you have asked for permission)
- Do not feed other people's animals without their permission
- If you are shaving your animals, clean up the hair that is left on the ground
- Clean up poop at washracks, stand, around the barn, parking lot, and sidewalks
- Put items away (scoops, blowers, clippers, etc.)
- Only bathe your animals when it is time for show, do not wash unnecessarily (they have oils on their skin that they need to keep in order to stay healthy, and washing them frequently strips that away)

TRASH ASSIGNMENT:

- take out at LEAST 2 times

Name of person assigned trash can duty

9/18-10/1

BARN RULES:

- Sweep in front of pen twice a day (NOT INTO MIDDLE)
- Sanitize common areas after use (Bleach water 1:10)
- **DO NOT** let animals roam
- Clean pens twice a day & take buckets to the dumpster
- pick up after your animal throughout barn
- pick up poop at washracks



**I DON'T KNOW WHO BROUGHT
RINGWORM TO THE JACKPOT**



Upon arrival at the school facilities after a show, your animal should be taken to the wash rack and shampooed with an anti-fungal soap.

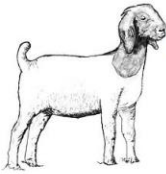


Lake Travis FFA

Home FFA INFORMATION CONTACT INFO LIVESTOCK INFORMATION CALENDAR 2022-2023 UIL Eligibility Calendar 2021-2022 LT FFA Sponsors
2022-2023 Sponsorship Packet ALUMNI Pet Shot Clinic

Sign-In Register

Goat Guide



Goat Guide

To assist FFA & 4-H members in raising a successful market goat project.

[PRO TIPS ~ Raising a Mkt Goat](#)

[Market Goat Showmanship with Dr. Jeff Ripley](#)

[Goat Showmanship & Exercise](#)

Lake Travis FFA

Home FFA INFORMATION CONTACT INFO LIVESTOCK INFORMATION CALENDAR 2022-2023 UIL Eligibility Calendar 2021-2022 LT FFA Sponsors
2022-2023 Sponsorship Packet ALUMNI Pet Shot Clinic

Sign-In Register

Lamb Guide

[Training and Showmanship with Dr. Ramsey](#)

[Shearing Lambs with Dr. Ramsey](#)

[Lamb Tips by Weaver Livestock Supplies](#)

TOO MANY
Critics
WITH NO
Credentials



@CoffeeBreakDown

A spiral-bound notebook with a brown cover and a white page. The spiral binding is on the left side. The page is mostly blank, with a horizontal line near the top. In the center of the page, there are two question marks, the word "QUESTIONS", and another two question marks.

??

QUESTIONS

??